

NOTES:

Sensitivity: 16' /2mm bubble movement
 Centre Ring: $\Phi 8.3\text{mm} \pm 0.1$ external diameter
 Color : Black
 Line Thickness: 0.3mm
 Bubble: $\Phi 5.1 \pm 0.3$ at 20° C

SYMBOL

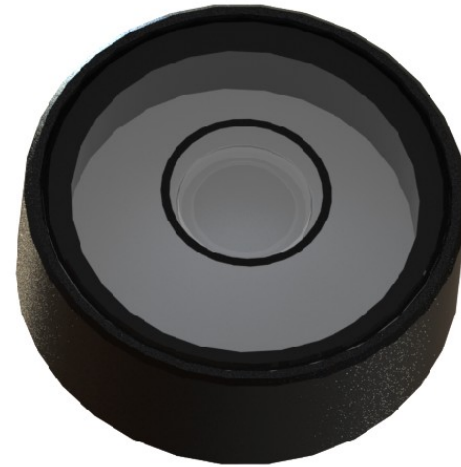
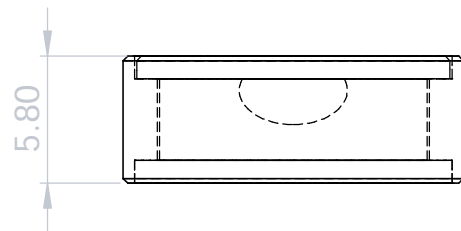
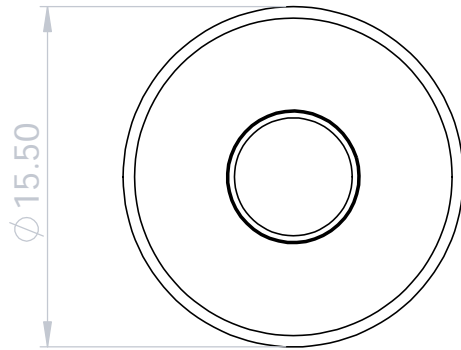
Liu

REVISION RECORD

Drawn

DATE

2002-6-23



 **L.V Level Co.,Ltd**
www.level-tool.com
sail@level-tool.com

Unless Otherwise Specified:Units: mm
 Tolerances: XX. ± 1.0 | XX.X ± 0.25 | XX.XX ± 0.1

MATERIAL:
 Vial: Glass
 Housing: Aluminum

DRAWN BY:

liu

DATE: 2002-6-23

DRAWING NUMBER

768#,Nanhai Road,Nantong,Jiangsu,China

TITLE:
 Circular vial 15.5mm dia, sens 16' /2mm

SCALE: 3:1

GCV5586-2