

NOTES:

Sensitivity: 1 degree/2.5mm bubble movement
 Centre Ring: $\Phi 15.5\text{mm} \pm 0.1$ external diameter
 Color :BLACK
 Line Thickness: 0.3mm
 Bubble: $\Phi 14.5 \pm 0.3$ at 20°C
 Liquid: Clear
 Backing: Transparent
 Case Color: Black

SYMBOL

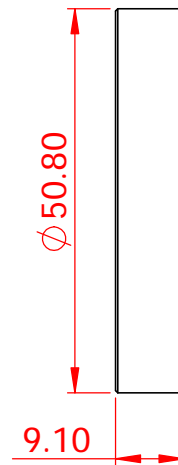
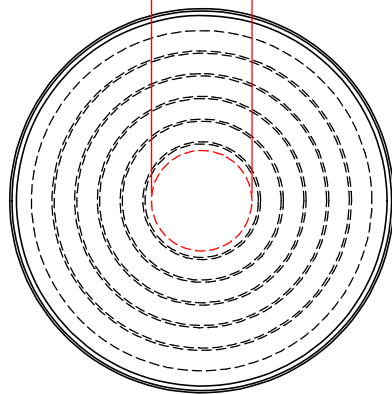
REVISION RECORD

DATE

Liu

Drawn

Φ Bubble: $\Phi 14.5 \pm 0.3$ at 20°C



L.V Level Co.,Ltd

www.level-tool.com
sail@level-tool.com

768#,Nanhai Road,Nantong,Jiangsu,China

Unless Otherwise Specified:Units: mm

Tolerances: XX. ± 1.0 | XX.X ± 0.25 | XX.XX ± 0.1

TITLE: Circular Vial, $\Phi 50.8\text{mm}$
 sensitivity $1^\circ / 2.5\text{mm}$

MATERIAL:
 Vial: Glass
 Housing: Aluminium

SCALE: 1:1

DRAWN BY:

liu

DATE: 2001-8-10

DRAWING NUMBER

GCV5673-1