

NOTES:

Sensitivity: 7'/2mm bubble movement
 Centre Ring: $\Phi 6.3\text{mm} \pm 0.1$ external diameter
 Color :Red
 Line Thickness: 0.3mm
 Bubble: $\Phi 4.0 \pm 0.3$ at 20°C
 Liquid: Clear
 Backing: Transparent
 Case Color: Black

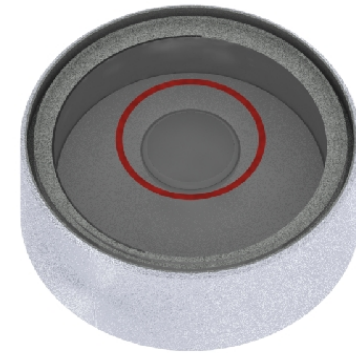
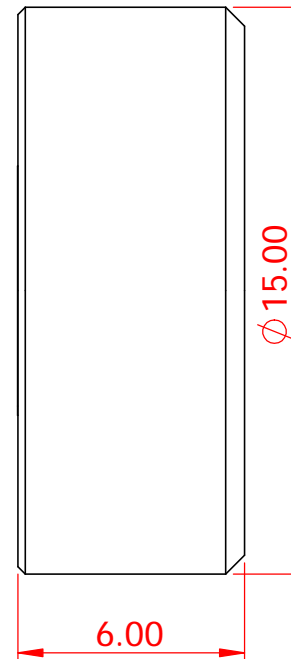
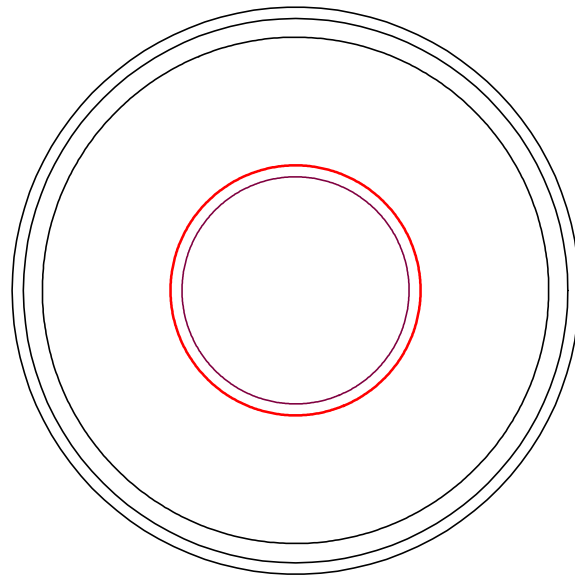
SYMBOL

REVISION RECORD

DATE

Liu

Drawn



L.V Level Co.,Ltd

www.level-tool.com
sail@level-tool.com

768#,Nanhai Road,Nantong,Jiangsu,China

Unless Otherwise Specified:Units: mm
 Tolerances: XX. ± 1.0 | XX.X ± 0.25 | XX.XX ± 0.1

TITLE:
 Circular Vial , $\Phi 15\text{mm}$ sensitivity 7' /2mm

MATERIAL:
 Vial: Glass
 Housing: Aluminium

SCALE: 5:1

DRAWN BY:

liu

DATE: 2001-3-15

DRAWING NUMBER

GCV5732-1