

**NOTES:**

Sensitivity: 27' / 2mm bubble movement  
 Centre Ring:  $\Phi 6.3\text{mm} \pm 0.1$  external diameter  
 Color :Black  
 Line Thickness: 0.3mm  
 Bubble:  $\Phi 4.0 \pm 0.3$  at 20°C  
 Liquid: Clear  
 Backing: Transparent  
 Case Color: Black

**SYMBOL**

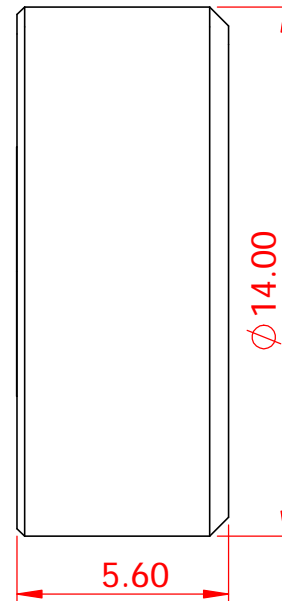
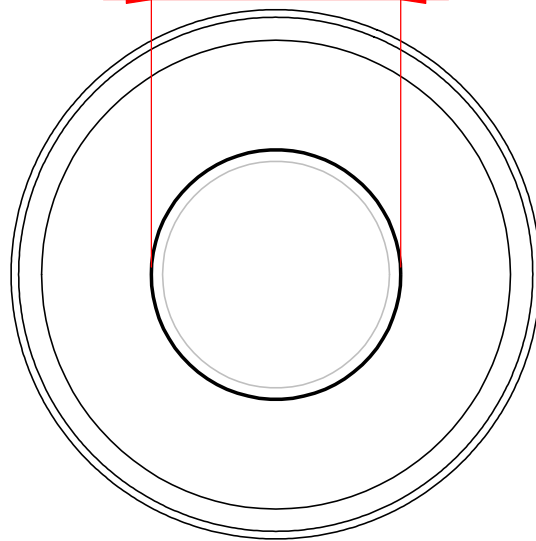
**REVISION RECORD**

**DATE**

Liu

Drawn

$\Phi 6.3\text{mm} \pm 0.1$  external diameter



**L.V Level Co.,Ltd**

[www.level-tool.com](http://www.level-tool.com)  
[sail@level-tool.com](mailto:sail@level-tool.com)

768#, Nantai Road, Nantong, Jiangsu, China

Unless Otherwise Specified: Units: mm

Tolerances: XX. ± 1.0 | XX.X ± 0.25 | XX.XX ± 0.1

**TITLE:**

Circular vial, 14mm, sensitivity 27' / 2mm

**MATERIAL:**

Vial: Glass  
 Housing: Aluminium

**SCALE:** 5:1

**DRAWN BY:**

liu

**DATE:** 2001-3-26

**DRAWING NUMBER**

GCV5757-1