

NOTES:

Sensitivity: 50'/2mm bubble movement
 Centre Ring: $\Phi 5.3\text{mm} \pm 0.1$ external diameter
 Color :Black
 Line Thickness: 0.3mm
 Bubble: $\Phi 3.8 \pm 0.3$ at 20°C
 Liquid: Clear
 Backing: White
 Case Color: Black

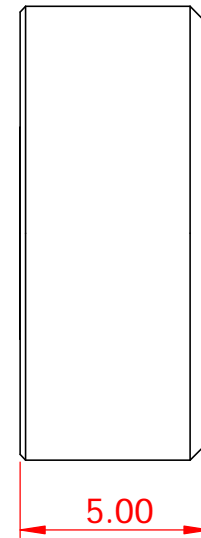
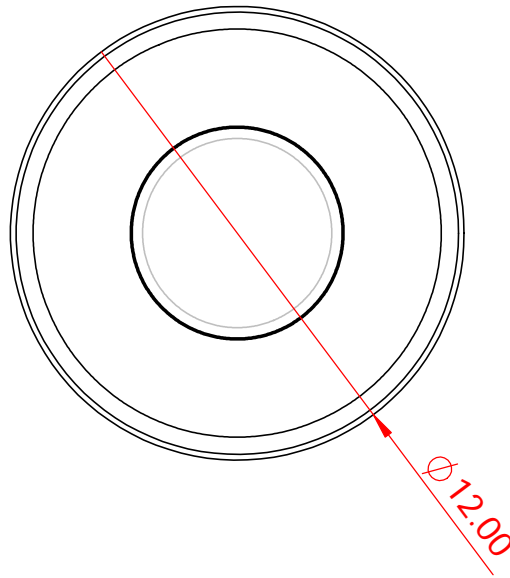
SYMBOL

REVISION RECORD

DATE

Liu

Drawn



L.V Level Co.,Ltd

www.level-tool.com
sail@level-tool.com

768#,Nanhai Road,Nantong,Jiangsu,China

Unless Otherwise Specified: Units: mm
 Tolerances: XX. ± 1.0 | XX.X ± 0.25 | XX.XX ± 0.1

TITLE:
 Circular vial , 15mm, sensitivity 50' /2mm

MATERIAL:
 Vial: Glass
 Housing: Aluminium

SCALE: 5:1

DRAWN BY:

liu

DATE: 2005-11-10

DRAWING NUMBER

GCV5801-1