

| | | | | | | | | |
|---------------|---|--|---------------------------|--|---------------|-----|------------------------|-------------|
| 6 | | | 5 | | 4 | 3 | 2 | 1 |
| NOTES: | | | | | SYMBOL | | REVISION RECORD | DATE |
| Part Number | Sensitivity | | Factory adjusted accuracy | | | Liu | Drawn | 2016-1-09 |
| ISOLPSL/0.02 | 0.02mm/m (4") per 2 mm bubble movement | | ±0.0075mm/m (±1.5") | | | | | |
| ISOLPSL/0.05 | 0.05mm/m (10") per 2 mm bubble movement | | ±0.015mm/m (±3") | | | | | |
| ISOLPSL/0.1 | 0.10mm/m (20") per 2 mm bubble movement | | ±0.035mm/m (±7") | | | | | |
| ISOLPSL/0.4 | 0.40mm/m (80") per 2 mm bubble movement | | ±0.125mm/m (±25") | | | | | |

Sensitivity: See table

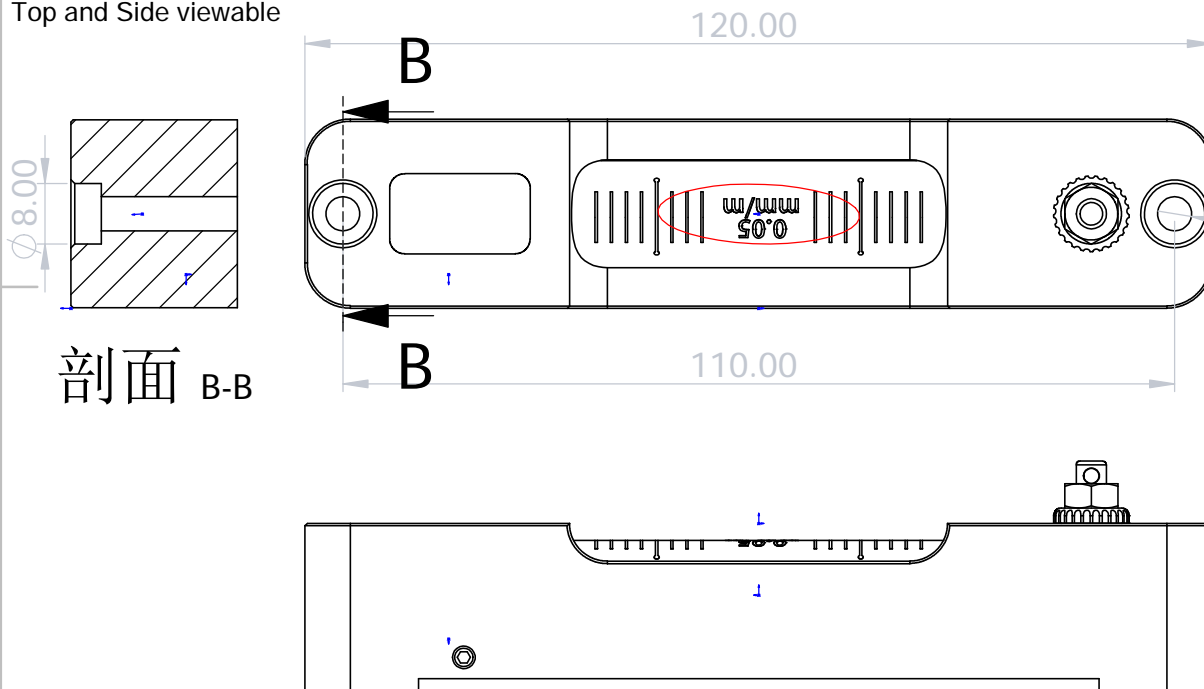
Adjustment range: ± 1.25mm/m (± 250")

Rigid adjustment

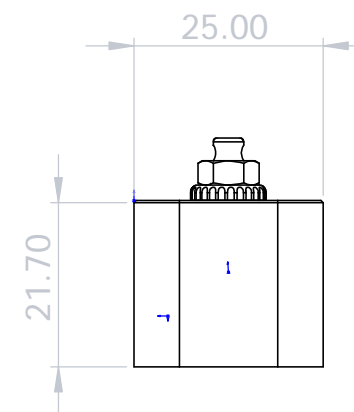
Temperature range: -30 to 65° C

Plastic cover to protect vial

Top and Side viewable



剖面 B-B



| | | | | | | |
|---|--|---|---|-------------------------|--|---|
| A | L.V Level Co.,Ltd www.level-tool.com sail@level-tool.com | Unless Otherwise Specified:Units: mm Tolerances: XX. ± 1.0 XX.X ± 0.25 XX.XX ± 0.1 | MATERIAL: Mild Steel Red Powder Coat | DRAWN BY: Liu | DATE: 2016-1-09 DRAWING NUMBER ISOLPSL | A |
| | 768#,Nanhai Road,Nantong,Jiangsu,China | TITLE: Adjustable level | SCALE: 1:1 | | | |

6

5

4

3

2

1